

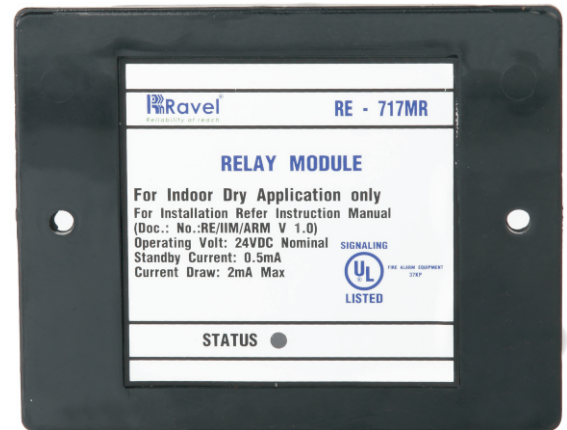
RE-717MR

Analogue Addressable Relay Module



Product Overview:

RE-717MR Relay Module facilitates third party devices to interface with Ravel make addressable panel. Relay Modules are the remote devices to activate potential free contacts. The RED blinking LED indicates normal operating conditions and the steady state LED for activated conditions. DIP switches are provided for addressing of the module. The Monitor circuit is supervised for faulty condition.



Special Features:

- Indian Manufacturer - International Std.
- UL-Listed (9th Edition).
- Modular Construction.

Features:

- Module Status by RED LED.
- Analogue Communication with the panel.
- Module Addressing by 8 way DIP switches.
- Low Standby Current.
- Available with suitable back boxes.

Electrical Specification:

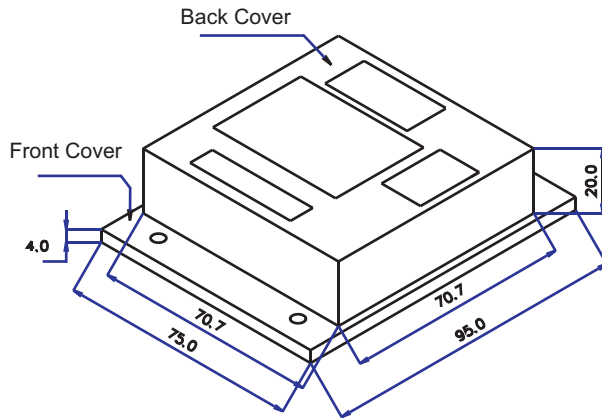
Operating Voltage	:	24 VDC Nominal
Current Draw	:	2 mA Max.(Latched)
Standby Current	:	0.5 mA
Contact Rating	:	2A @ 30VDC(Resistive)
Temperature Range	:	0°C to 49°C / 32°- 120°F
Humidity	:	93 ± 2% RH (non-condensing) at 32 ±2° C / 90 ±3° F.

Mechanical Specification:

Dimensions	:	(95 W X 75 H X 24D) mm
Color	:	Black
Weight	:	0.35 Kg

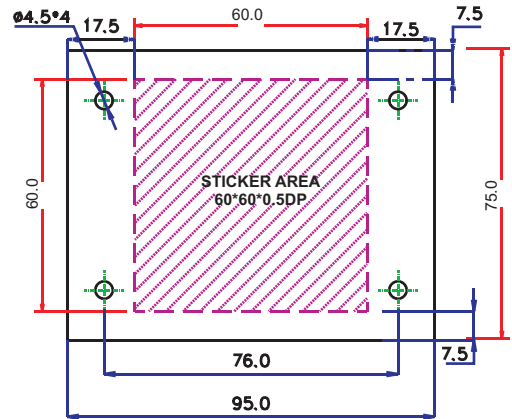


G.A.Diagram:



ALL DIMENSIONS ARE IN MM

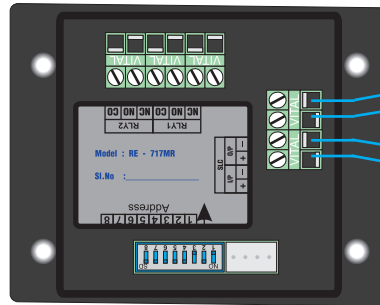
Mounting Detail:



Wiring Configuration for Relay Module

Use only Listed Compatible Panel

Relay 2 Co
Relay 2 No
Relay 2 Nc
Relay 1 Co
Relay 1 No
Relay 1 Nc



- To Next Device or Panel
+

- From Panel or Previous Device
+

NOTE:

- * ALL WIRING SHOWN IS SUPERVISED AND POWER LIMITED
- * RELAY OUTPUT ARE NOT SUPERVISED

Compatible Devices:

MODELS	DESCRIPTION
Avani	Analogue Addressable Fire Alarm Control Panel

Ordering Information:

MODEL	DESCRIPTION
RE - 717MR	Analogue Addressable Relay Module

*In the interest of improving quality and design, Ravel reserve the right to change the specification without prior notice.

India:

RAVEL ELECTRONICS PVT LTD.,

(An ISO 9001 Company)

150A, Electronics Industrial Estate, Perungudi, Chennai - 96 .India.
E-Mail: marketing@ravelfire.com; Web : www.ravelfire.com

United Kingdom:

RAVEL ELECTRONICS LTD.,

Unit 11, Chancel Industrial Estate, Newhall street,
Willenhall WV13 1NX, West Midlands, United Kingdom.
E-mail: info@ravelfire.co.uk ;Web: www.ravelfire.co.uk